



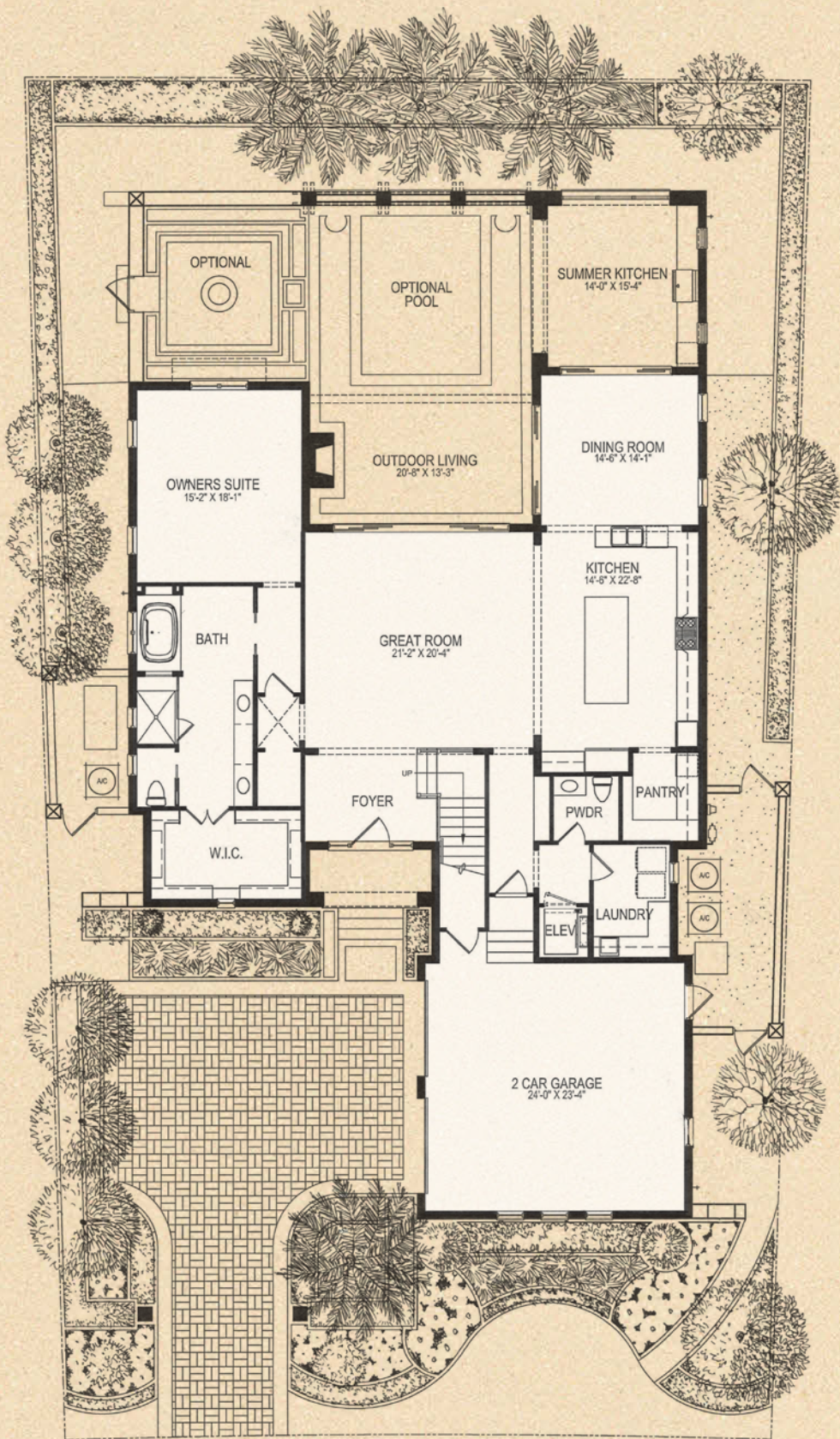
# GOLDEN OAK

At Walt Disney World Resort



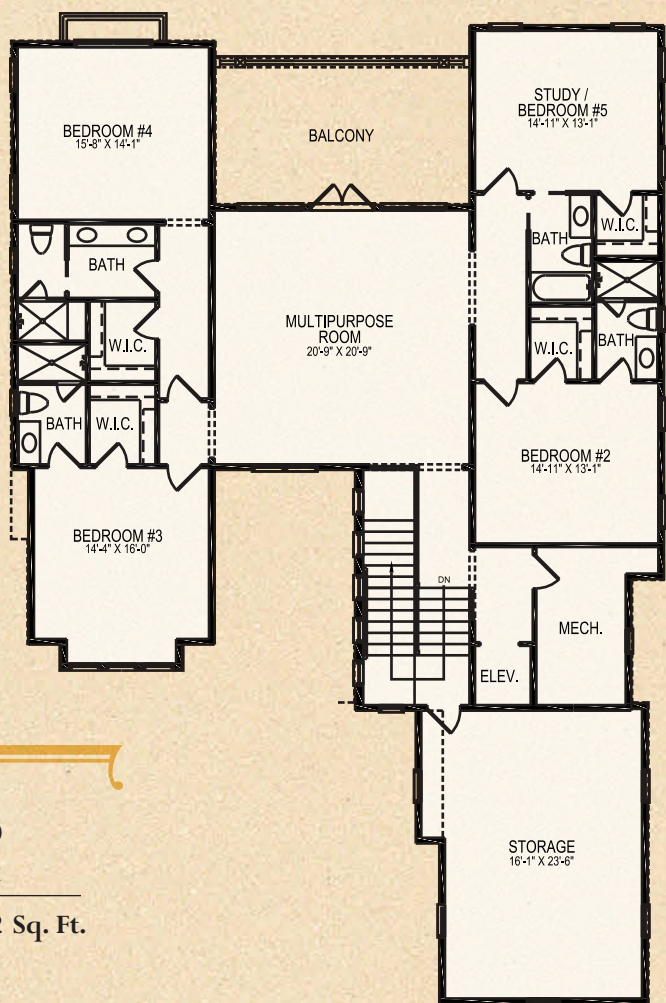
## WINDLEY





MATTRAW PLACE

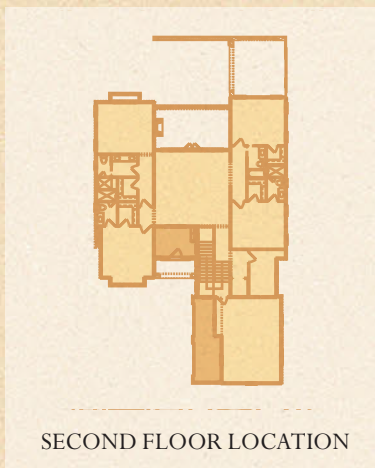
FIRST FLOOR



SECOND FLOOR

First Floor A/C Living	2,340
Second Floor A/C Living	2,572
<b>Total A/C Living</b>	<b>4,912 Sq. Ft.</b>

2 Car Garage	682
Balconies	272
Outdoor Living and Porches	578
<b>Total Square Feet</b>	<b>6,444 Sq. Ft.</b>



SECOND FLOOR LOCATION

**WINDLEY**  
 Designed to fit Marceline Lot 73\*  
 Goehring & Morgan Construction, Inc.  
*\*Plan may fit other homesites with minor or major modifications  
 which must be approved by the Architectural Control Board.*







 GOEHRING & MORGAN CONSTRUCTION, INC.

 **GOLDEN OAK REALTY** 

**10501 DREAM TREE BOULEVARD ■ GOLDEN OAK, FLORIDA 32836**

**407.939.5577 (MAIN) ■ 407.938.9999 (FAX)**

**DISNEYGOLDENOAK.COM**



Illustrations are artist depictions only and may differ from completed improvements. Artist rendering may not reflect the actual details or landscaping of the finished home. Builder reserves the right to make changes to these plans, specifications, dimensions, and elevations without prior notice. Builder lot assignments are based on current development plans which are subject to change without notice. Plans are presented as Concept plans only and will require additional design reviews as required by the Architectural Control Board (ACB). All plans must receive final approval by the ACB before being built. Dimensions are subject to change without notice. See a sales associate for complete and current information. Printed 7/2017.